

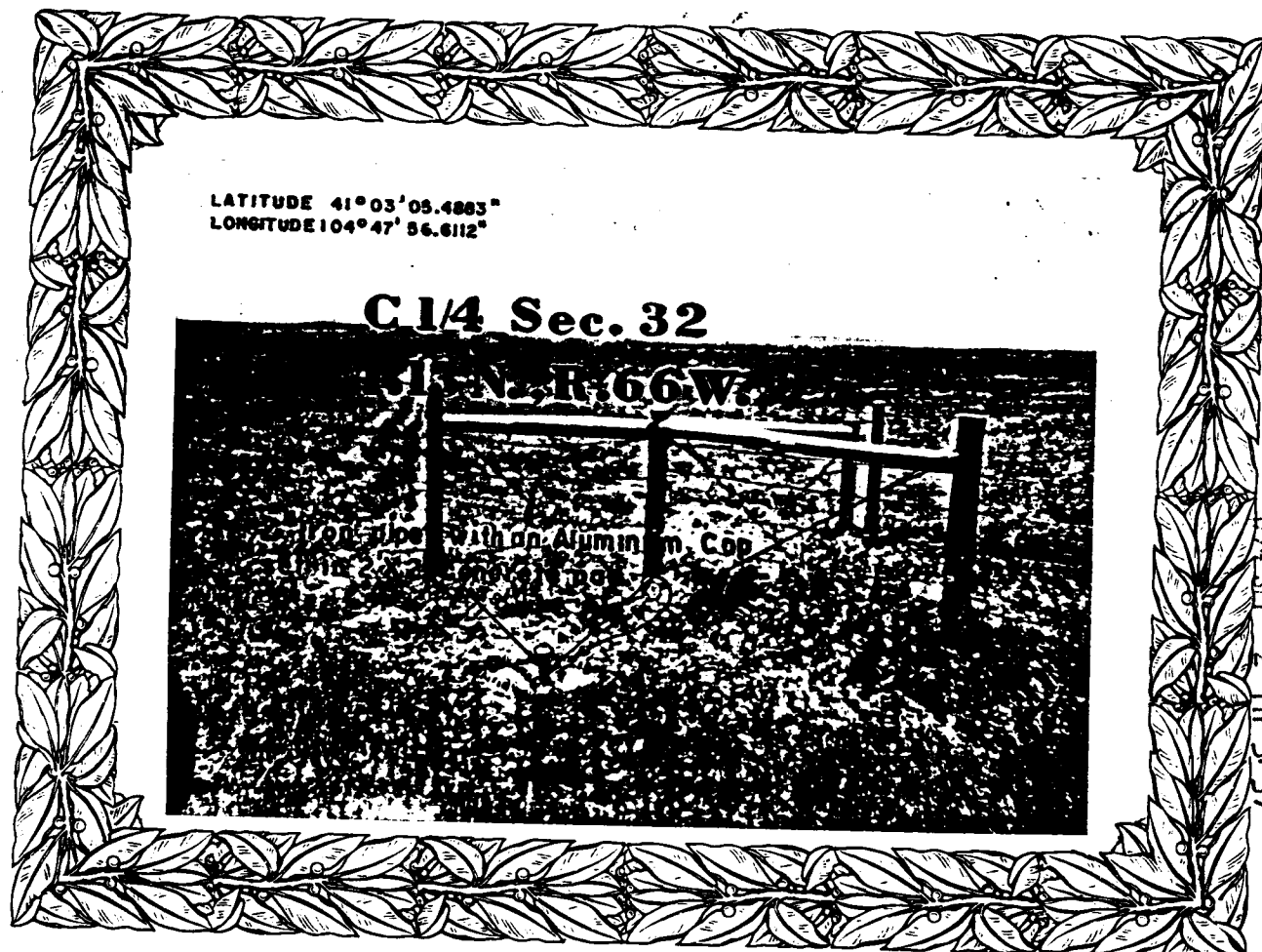
State of Wyoming Corner Record

(In compliance with the *CORNER PERPETUATION AND FILING ACT*, Wyoming Statutes, 1977, Section 36-11-101, et. seq., and the Rules and Regulations of the Board of Registration for Professional Engineers and Professional Land Surveyors)

Reverse side of this form may be used if more space is needed.

Record of original survey and citation of source of historical information (if corner is lost or obliterated). Description of corner monumentation evidence found and/or monument and accessories established to perpetuate the location of this corner. Sketch of relative location of monument, accessories, and reference points with course and distance to adjacent corner(s) (if determined in this survey). Method and rationale for reestablishment of lost or obliterated corner.

Found a 1 1/4" iron pipe being the S.E. corner of Hyndman Homesites and being the C 1/4 of Sec.32. This center 1/4 was set by the Laramie County Surveyor and utilized by others working in this section. In April 1983 this corner was again recorded but was described as a 5/8" rebar. The pipe as found was bent but when straight ened, it fit the calls on the plat of Hyndman Homesites and other ties. After plumbing said 1 1/4" pipe, a 2" pipe with an aluminum cap was set over said pipe and a 2'X2' concrete pad was cast around this monument. The ties as called for in the 1983 record still fit this monument and still fall on a line from the 1/4 corners as found.



RECEIVED
 LARAMIE COUNTY CLERK
 CHEYENNE, WY.
 1498889

1991 SEP -2 PM 3:37

Date of Field Work: 1004 Office Reference: _____

CROSS INDEX DIAGRAM

	1	2	3	4	5	6	7	8	9	10	11	12	13	14	15	16	17	18	19	20	21	22	23	24	25
A																									
B																									
C	6																								
D																									
E																									
F																									
G	7																								
H																									
I																									
J																									
K																									
L	18																								
M																									
N																									
O																									
P	19																								
Q																									
R																									
S																									
T	30																								
U																									
V																									
W																									
X	31																								
Y																									
Z																									

Firm/Agency, Address

This corner record was prepared by me or under my direction and supervision.

Terrestrial Surveying & Mapping
 1127 Terry Ranch Rd.
 Cheyenne, Wyoming 82007

SEAL & SIGNATURE

Telephone Number: (307) 634-9360



1161

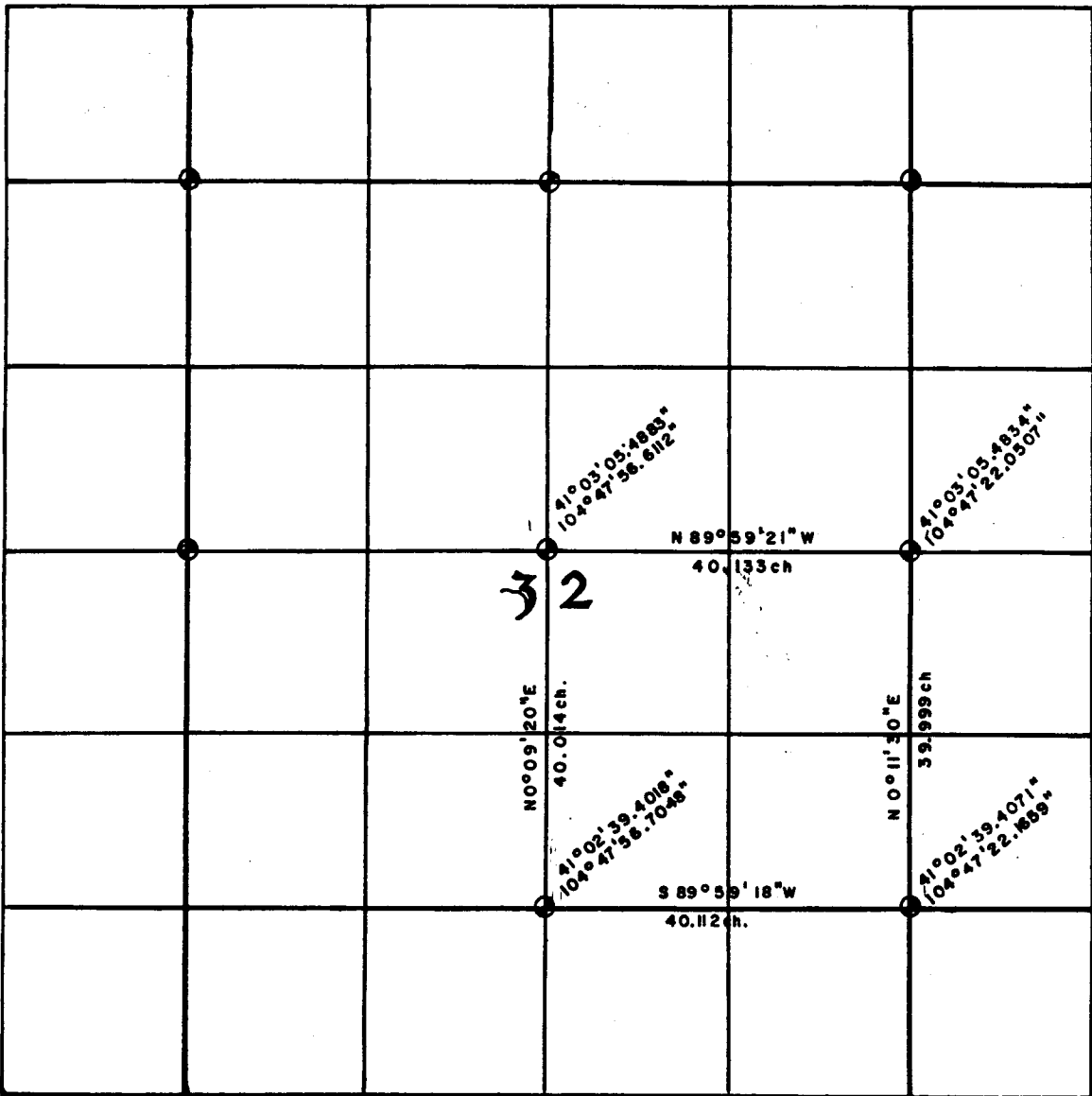
Section Diagram

Project _____

Date: AUGUST 1994

Section 32 Township 13 NORTH Range 66 WEST Meridian 6TH P.M.

County LARAMIE State WYOMING Scale _____



30	31	32	33	34	35	36	37
1	6					1	6
12							7
18							18
24							19
28							30
30	31	X				36	37
1	6	5	4	3	2	1	6

Notes: _____

TERRESTRIAL SURVEYING & MAPPING Co.
 P.O. Box 82; CHEYENNE, WYOMING 82003

